



# COD|A

10<sup>th</sup> ANNIVERSARY

---

# AWARDS

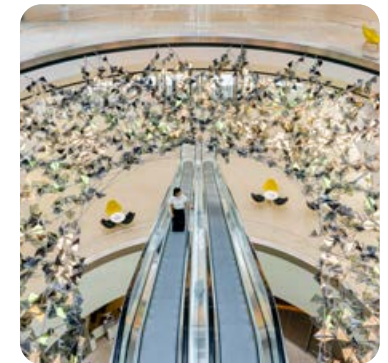
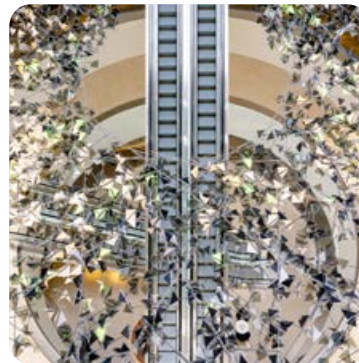
2022 Winners

An eBook produced by [Barco](#)

## Digital Phyllotaxy | Jason Bruges Studio



**SEOUL, SOUTH KOREA (HANKOOK TIRE TECHNOPLEX)** - In a tribute to the beauty of patterns in nature, Jason Bruges Studio aimed to create a journey through leaves and lights, utilizing technology and natural lighting to replicate how a tree casts light on surfaces at different elevations.



“ I love the mashup of biophilic and geometric forms, and the organic feel of the support branches.

[read more](#)

GUY KEMPER



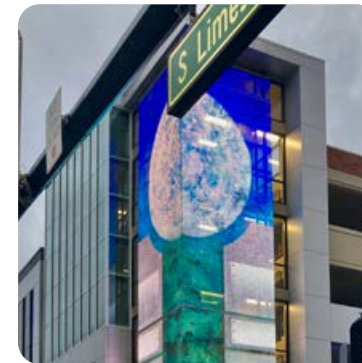
## MOON SENTINEL | Steene Studio



**LEXINGTON, KENTUCKY** - MOON SENTINEL, a towering LED screen integrated into a building located on the campus of the University of Kentucky, is the top project this year in the Education category.

The work displays a moon rising over hues of green and blue, imagery from a painting by Helene Steene.

Displays on the screen can be seen from many angles, and the project is capable of being programmed to exhibit an array of information.



**The collaboration of art, architecture and media create a wonderful and lasting impression.**

[read more](#)

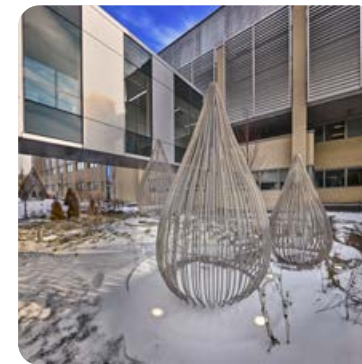
DEBRA LEHMAN-SMITH

## Raindrops | Linda Covit



**MONTREAL, QC, CANADA** - Conceptualized by Linda Covit, the project is intended to contribute to a soothing atmosphere and be perceived in different ways as seasons change.

Situated in a part of a hospital's grounds near what is known as the Dialysis Pavillion, the construction of Raindrops was informed by Covit's experiences at a medical facility with a friend taking part in chemotherapy treatment.



“ **Beautiful sculptures, especially because they appear as topiaries in the winter, reminders of plants and bushes.** ”

[read more](#)

JORGE ARANGO



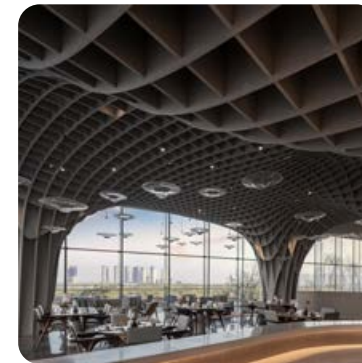
## Birch Forest | Kris Lin International Design



**XI'AN, CHINA** - This two-level design includes a restaurant, a cafe, and room for an art gallery.

The usage of mortise and tenon joints in Birch Forest pays respect to the history of Chinese architecture.

Birch Forest is intended to be expansive and comforting, reminiscent of the dimensions and peacefulness found in a natural forest.



**The art is the environment. The concept of creating a forest-like environment to leave your daily life behind and enter a whole new world.**

[read more](#)

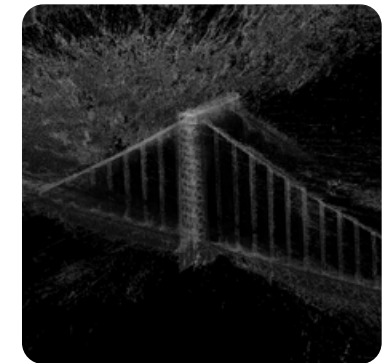
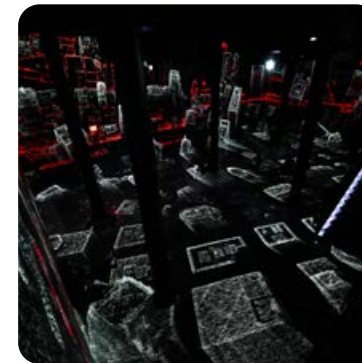
MALCOLM HOLZMAN

# TRUST | fuse\* factory



**NEW YORK CITY, USA** - TRUST explores the connection between people and three pillars of society: finance, social media networks, and the news, as well as how these realities shape our existence.

To create this project, information from the University of Michigan's Index of Consumer Sentiment was used, as well as 750,000 tweets including the word "trust."



**Visually absorbing and spellbinding. Super heady - I love it!**

[read more](#)

JORGE ARANGO

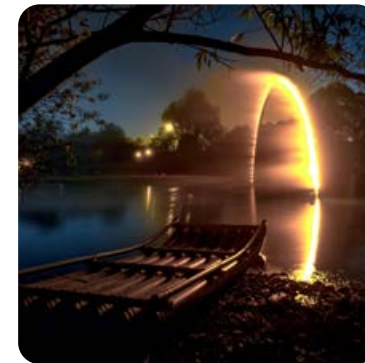


## Arc ZERO: Eclipse | James Tapscott



**KAOHSIUNG, TAIWAN** - Simplicity is an important theme in this project, and the properties of water add to its splendor.

Arc ZERO: Eclipse was made for this year's Taiwan Lantern Festival.



“ **This work is poetry, light and air.  
Brilliant to create a work and not  
try to control it!** ”

[read more](#)

GISUE HARARI

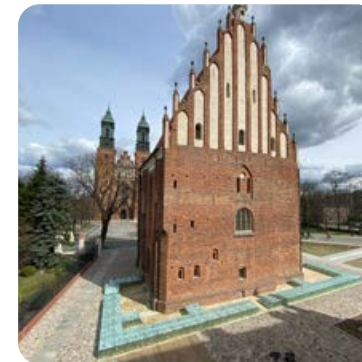


## The Spirit of Palatium | ARCHIGLASS



**POZNAŃ, POLAND** - Involving many experts including academics, archeologists, religious authorities, city employees, and fabricators, The Spirit of Palatium is a monument to the ruins of a residence Mieszko I and his wife, Dobrowa, important figures in Polish history, were familiar with.

Almost thirteen tons of glass were used. It was created with the generous contributions from the Archdiocese of Poznań and the City of Poznań.



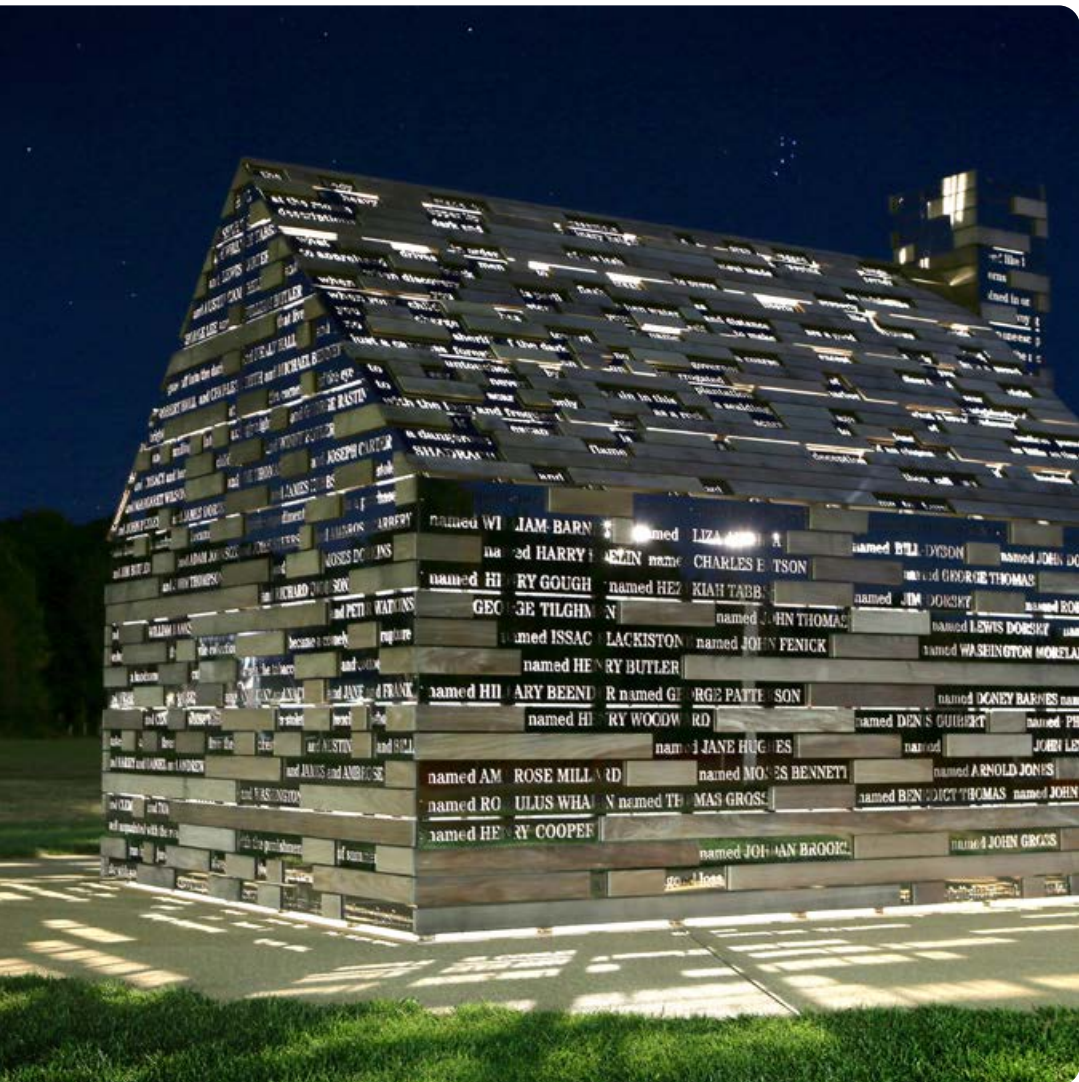
**This is mysterious and elegant. The glass structures are so respectful of the centuries-old structure and so subtly brought forth.**

[read more](#)

KEVIN WALZ



# From Absence to Presence, Commemorating Contributions of Enslaved People | RE:site



**MARYLAND, USA** - RE-Site built this project on land at St. Mary's College in Maryland, close to an area where researchers believe slave quarters may have once been.

Encouraging reflection on the history of slavery and the implications of the past, light powerfully flows through the structure, while erasure poetry contributions from Quenton Baker add context to the space.



“**Fantastic, such simplicity comes from hidden cleverness.**”

[read more](#)

JESSICA-CHRISTIN HAMETNER

## Sculptural Entryway | Jacob Kulin



**NEW HAMPSHIRE, USA** - Made from anodized aluminum and stainless steel, Sculptural Entryway was created for the entrance of a home in New Hampshire.

Kulin compares the project to an extended tree branch providing an invitation.



[read more](#)

“ **Eye-catching and beautiful - love this!**

JESSICA-CHRISTIN HAMETNER

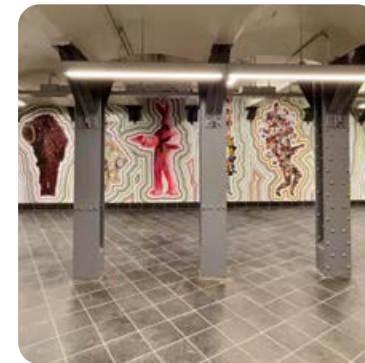


## Each One, Every One, Equal All | Mayer of Munich



**NEW YORK CITY, USA** - Focused on celebrating the inherent beauty all individuals possess, many subway travelers encounter this project each day and night in New York City.

Mayer of Munich helped over 48 of artist Nick Cave's Soundsuits be represented in over 4,000 feet of mosaic. The mosaic pieces use various materials to create texture and capture some of the essence of his complex designs.



“ **Exciting visual experience with all the colors of the rainbow - and such movement!**”

[read more](#)

BARBARA TOBER

## Konjiki Ramen & Saryo | Dialogue 38



**TORONTO, CANADA** - The project was developed by Bennett Lo and Veronica Lee of Dialogue 38.

The cafe honored with a Michelin star was designed with colorful patterns that are stylistically inspired by Japanese art.



“ **The art serves as an invitation to the experience that is augmented in the interior space.**

[read more](#)

MALCOLM HOLZMAN

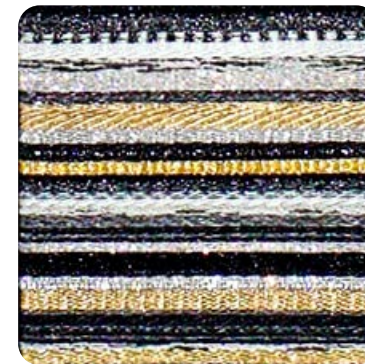
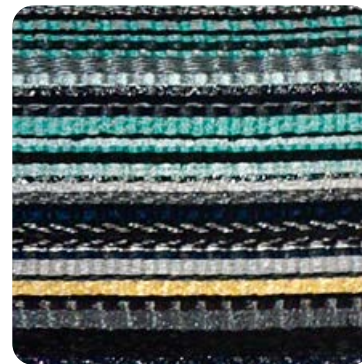


## Totem - a Wall's Jewelry | Sebastien Courty



**US EMBASSY IN DHAHRAN, SAUDI ARABIA** - Major themes of this work include an exchange of information and building understanding between Saudi Arabia and the United States

The panels were woven by hand and symbolize 13 areas in Saudi Arabia.



**“ This is amazing work. It is almost too much, but careful thought and a restrained palette keep it just in check. So beautiful!**

[read more](#)

GUY KEMPER





## Barco – experiences that impress, inspire and entertain

An entertaining video introducing the exhibition's subject, interactive displays to support the historical information, or a one-of-a-kind projection mapping transforming your venue in an immersive art installation – with Barco visualization you can bring your narrative to life in the most creative ways.

Barco has a long-standing leading position across the entire visualization chain with battle-proven technologies that bring your creativity to life with powerful images, lifelike colors and pinpoint resolution.

For you it means getting your story told with stunning visuals.  
For your audiences it's a remarkable experience they'll never forget.

[www.barco.com](http://www.barco.com)

**BARCO**